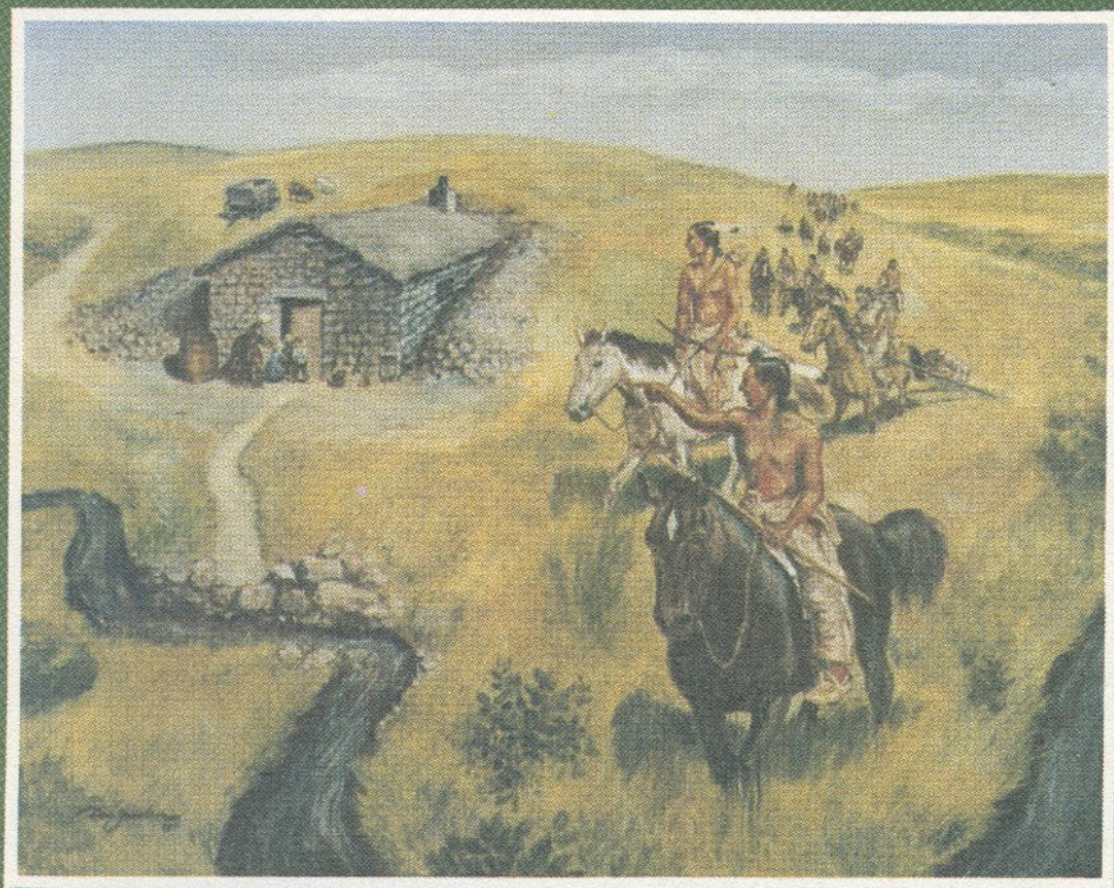


# KANSAS HISTORY

A JOURNAL OF THE CENTRAL PLAINS



Volume 5  
Number Two  
Summer 1982



# THE KANSAS STATE HISTORICAL SOCIETY

JOSEPH W. SNELL, *Executive Director*

## OFFICERS

DONALD R. MCCOY, Lawrence, *President*  
JAMES L. FORSYTHE, Hays, *First Vice-President*  
JUNE WINDSCHEFFEL, Topeka, *Second Vice-President*  
JOSEPH W. SNELL, Topeka, *Secretary*  
ROBERT W. RICHMOND, Topeka, *Treasurer*

## EXECUTIVE COMMITTEE

J. ERIC ENGSTROM, Wichita  
CLIFFORD R. HOPE, JR., Garden City  
WILFORD RIEGLE, Emporia  
WILLIAM H. SEILER, Emporia  
HARRIET C. SHATZELL, Hoxie  
HELEN L. SMITH, Colby  
HOMER E. SOCOLOFSKY, Manhattan  
FLOYD R. SOUDERS, Cheney  
CALVIN STROWIC, Abilene

### *Ex officio members*

DONALD R. MCCOY, Lawrence  
JAMES L. FORSYTHE, Hays  
JUNE WINDSCHEFFEL, Topeka  
WILLIAM E. UNRAU, Wichita

---

The Kansas State Historical Society solicits diaries, letters, and other original records, books and pamphlets written by Kansans or about Kansas, territorial and state newspapers up to 1876, photographs, and maps and atlases of the state. The Society will also be glad to consider objects suitable for the museum, especially those having a direct connection with Kansas history.

Gifts and bequests for the furtherance of the Society's work will be gratefully received. Such remembrances, in various forms, are appropriate permanent memorials to the interests of an individual or a group. A representative of the Society will be glad to consult with anyone wishing to make a gift or to establish a bequest or endowment. Address the Executive Director, KANSAS STATE HISTORICAL SOCIETY, 120 W. Tenth St., Topeka, Kan. 66612.

---

## THE COVER

This painting is Dan Jacobson's depiction of an event on his grandparents' homestead near Waterville in the late 1860's. While his grandfather, Peter Bloomquist, was away, a caravan of Indians approached the dugout home. His grandmother was working in the garden. She hustled her three sons and one daughter into the dugout and the Indians did not bother them. The daughter became the artist's mother. Jacobson, born in the Waterville area, now lives in Kansas City, Mo., and is a well-known painter of Kansas and Western subjects.

# KANSAS HISTORY

A JOURNAL OF THE CENTRAL PLAINS

Volume 5

Summer, 1982

Number 2

Published by

THE KANSAS STATE  
HISTORICAL SOCIETY

Forrest R. Blackburn,  
*Editor*

Dot E. Taylor,  
*Associate Editor*

Bobbie Pray,  
*Assistant Editor*

---

## CONTENTS

	PAGE
JOHN ISE, 1885-1969, ECONOMIST, CONSERVATIONIST, PROPHET OF THE ENERGY CRISIS . . . . . <i>Richard B. Sheridan</i>	83
THE PATRIARCH OF ABILENE: Cleyson L. Brown and the United Empire, 1898-1935 . . . . . <i>Sondra Van Meter McCoy</i>	107
EARLY SURVEYS IN KANSAS . . . . . <i>Erich Fruehauf</i>	121
THE STATE OF KANSAS V. WILD HOG, ET AL. . . . . <i>Todd D. Epp</i>	139
BYPATHS OF KANSAS HISTORY . . . . .	147
KANSAS HISTORY OFF THE PRESS . . . . .	148

---

*Kansas History, A Journal of the Central Plains* is published quarterly at 120 W. 10th St., Topeka, Kan. It is distributed without charge to members of the Kansas State Historical Society; single issues, when available, may be purchased for \$2.50 each. Membership dues are: annual \$10, sustaining \$20, patron \$100, life \$100. Membership applications and dues should be sent to Robert W. Richmond, treasurer.

Correspondence concerning articles for *Kansas History* should be addressed to the editor. The Society assumes no responsibility for statements made by contributors.

Second-class postage has been paid at Topeka, Kan.

Postmaster: Send address change to *Kansas History*, 120 W. 10th St., Topeka, Kan. 66612.

ISSN:0149-9114