

# KANSAS HISTORY

---

A Journal  
of the  
Central Plains

Volume 13, Number 2  
Summer 1990







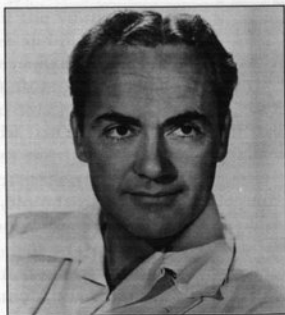
*A farmer's hired man in Sheridan County, Kansas, 1939.*

**Cover and Back Cover:** *From the farm life depicted in Thomas Hart Benton's Threshing Wheat (cover) to change and protests brought on by hard times (back cover); and from a Kansan famous for his career on the silver screen to a once well-known politician—Kansas has seen its people endure the worst and offer the best during the first decades of the twentieth century.*

# KANSAS HISTORY

Volume 13 Summer 1990 Number 2

Marilyn J. Holt, *Editor*  
Bobbie Pray, *Associate Editor*  
Dot E. Taylor, *Associate Editor*



**Harvesting in Kansas During  
the Early Decades of This  
Century: A Reminiscence** 82  
*by Solomon L. Loewen*

**Within the Shadows of  
Pickfair: An Interview With  
Charles "Buddy" Rogers** 88  
*edited by Ronald L. Davis*

**The Forgotten Candidate:  
Omar B. Ketchum and the  
Senate Race of 1936** 97  
*by Shane N. Galentine*

**From Self-Help to Federal  
Aid: Unemployment and  
Relief in Kansas, 1929-1932** 107  
*by Peter Fearon*

**Book Reviews** 125

**Book Notes** 130



*Kansas History* (USPS 290 620) is published quarterly by the Kansas State Historical Society, 120 West Tenth Street, Topeka, Kansas 66612-1291.

Second-class postage paid at Topeka, Kansas. Postmaster: Send address changes to *Kansas History*, 120 West Tenth Street, Topeka, Kansas 66612-1291.

Copyright©1990 Kansas State Historical Society. ISSN 0149-9114.

Layout and Production: H. M. Ives and Sons, Inc.

Typesetting: H. M. Ives and Sons, Inc.

Printed by H. M. Ives and Sons, Inc.  
Topeka, Kansas





