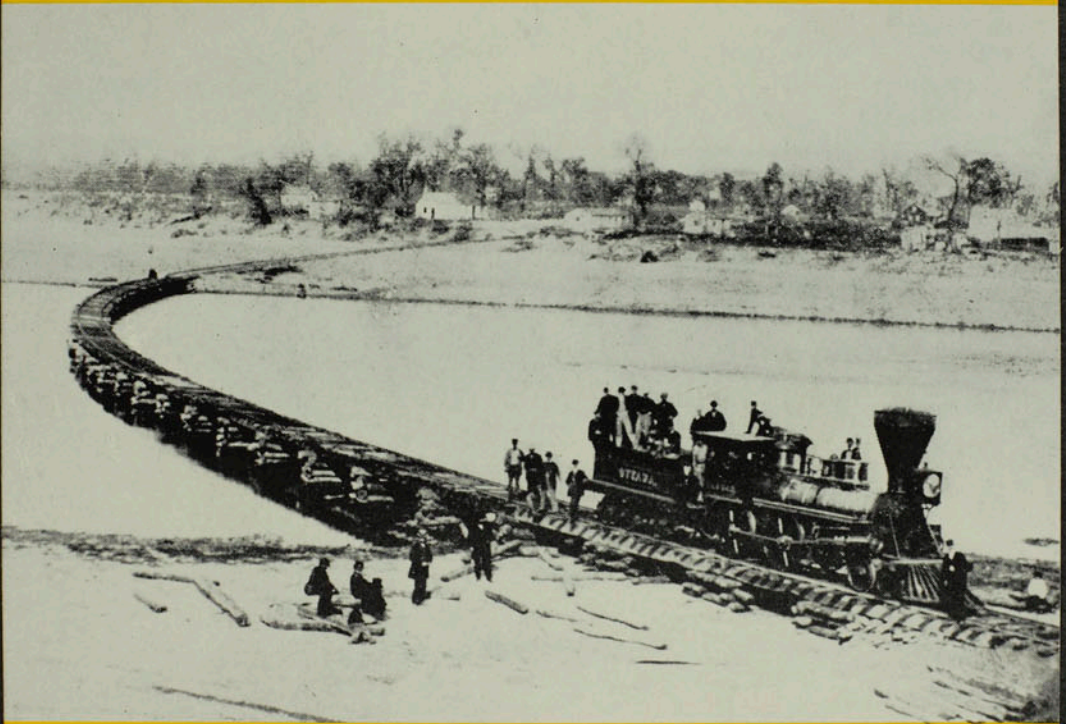


THE  
KANSAS HISTORICAL  
QUARTERLY

August • 1947



Published by  
Kansas State Historical Society  
Topeka

KIRKE MECHEM  
*Editor*

JAMES C. MALIN  
*Associate Editor*

NYLE H. MILLER  
*Managing Editor*

---

## CONTENTS

	PAGE
THE BUILDING OF THE FIRST KANSAS RAILROAD SOUTH OF THE KAW RIVER .....	<i>Harold J. Henderson</i> , 225
FOLLOWING PIKE'S EXPEDITION FROM THE SMOKY HILL TO THE SOLOMON .....	<i>Theo. H. Scheffer</i> , 240
<i>With map of Pike's route through Saline and Ottawa counties, facing p. 240, and photographs of Sentinel Rock and Rocky- fern creek, Ottawa county, facing p. 241.</i>	
THE REPORT OF THE WYANDOT EXPLORING DELEGATION, 1831, Edited by <i>J. Orin Oliphant</i> , 248	248
THE EARLY WORK OF THE LORETTINES IN SOUTHEASTERN KANSAS .....	<i>Sister M. Lilliana Owens, S. L.</i> , 263
<i>With sketches of the Catholic Osage Mission in 1865, facing p. 272, and Saint Francis Parish in the 1890's, facing p. 273.</i>	
LETTERS OF JULIA LOUISA LOVEJOY, 1856-1864: Part Two, 1857.....	277
<i>With a sketch of the governor's mansion at Lecompton, facing p. 288.</i>	
BYPATHS OF KANSAS HISTORY.....	320
KANSAS HISTORY AS PUBLISHED IN THE PRESS.....	325
KANSAS HISTORICAL NOTES .....	332

*The Kansas Historical Quarterly* is published in February, May, August and November by the Kansas State Historical Society, Topeka, Kan., and is distributed free to members. Correspondence concerning contributions may be sent to the editor. The Society assumes no responsibility for statements made by contributors.

Entered as second-class matter October 22, 1931, at the post office at Topeka, Kan., under the act of August 24, 1912.

---

### THE COVER

The Leavenworth, Lawrence & Galveston railroad bridge across the Kansas river eighty years ago. It was the first north-south railroad bridge across the Kaw (*see pp. 225, 232*). The engine, "Ottawa," was the first locomotive on this road.

The view is from a stereoscopic photograph by Alexander Gardner of Washington, D. C.